

## **Instructions for TWAIN Driver Integration**

MouthWatch cameras easily integrate with many leading systems using a TWAIN driver.

### **Step 1 – Download & Install the Button Capture Software**

- Go to: [www.mymouthwatch.com/support](http://www.mymouthwatch.com/support) and download our Button Capture Software.
- View the installation guide
- Install the Button Capture Software program, following all steps in the guide
- Right click on the MouthWatch Capture icon in the system tray
- Select “TWAIN” from the Button Capture Software menu

### **Step 2 – Plug in the MouthWatch Camera**

Make sure that you plug the USB connector into a powered USB port. Sometimes, these are located on the front or back of the computer. If your monitor has USB ports, these may not be powered.

### **Step 3 – Windows Recognizes the Camera**

Once the MouthWatch camera is plugged in, you should see a small alert on the bottom saying that New Hardware “USB Video Device” was recognized.

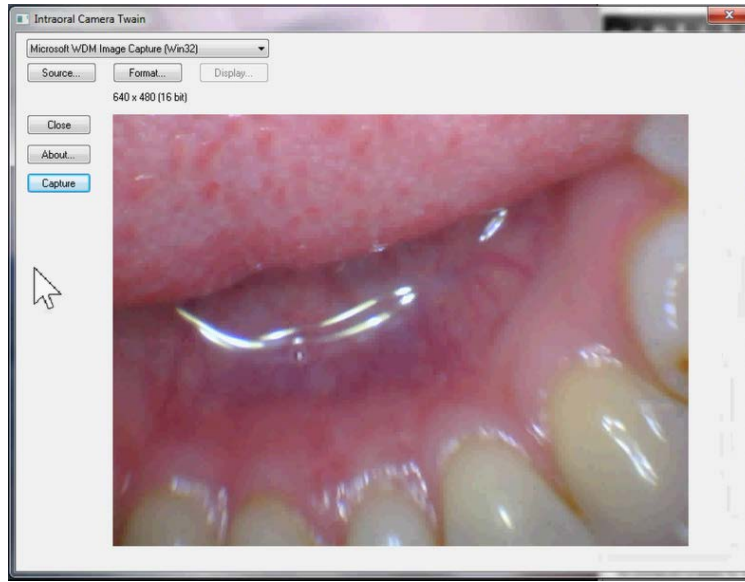
### **Step 4 – Install the TWAIN Driver**

You will need to copy the TWAIN driver from the MouthWatch Capture program folder into the C:\Windows\twain\_32 folder.

1. Open C:\Program Files (x86)\MouthWatch Capture\Prerequisites
2. Copy the file VideoDS.ds
3. Open C:\Windows\twain\_32
4. Paste the VideoDS.ds file into this folder

### **Step 5 – Launch Imaging Software**

- Each program is different, but yours will likely look for a TWAIN device. Our TWAIN driver will be identified as “Intraoral Camera Twain 1.9”
- This will launch the TWAIN capture window



- Pressing the capture button on the camera will take a photo and store it to the patient chart

## **Step 7 – All Set!**

- If you need additional support, please call us at 877-544-4342